

# Hydraulic Cylinders & Accessories

## Engineered for Excellence

### Accessory Valves

**Pressures:** Up to 5000 psi

**Flows:** Up to 45 GPM

**Porting:** Standard SAE (ORB) – Other options available

**Materials Used:** Aluminum, Steel, Ductile

#### Relief Valves

- Used to control system pressure or the max output force of a hydraulic cylinder for motor
- Oil flows through unless the pressure setting is exceeded, at which time oil flows back to tank

#### Single & Dual Pilot Operated Check Valves

- Provides a positive lock in both directions of a hydraulic cylinder or motor to hold loads and prevent them from creeping / drifting
- Will also prevent a load from dropping in the event of a hose failure.

#### Counterbalance & Over Center Valves

- Used to control the rate of descent in lowering applications (based on pump output - not load)
- Will also prevent a load from dropping in the event of a hose failure

#### Flow Divider Combiner

- Will extend 2 cylinders at the same speed or run 2 hydraulic motors at the same RPM.
- Equally divides output flow / equally combines return flow.

#### Cross Over Relief Valves

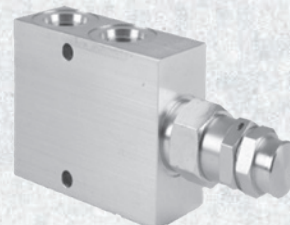
- To protect the cylinder / motor / other components from pressure spikes.
- Place between component (cylinder/motor) and the directional control valve.
- Works in both directions



*Relief Valves*



*Single & Dual Pilot Operated Check Valves*



*Counterbalance & Over Center Valves*



*Flow Divider Combiner*



*Cross Over Relief Valves*