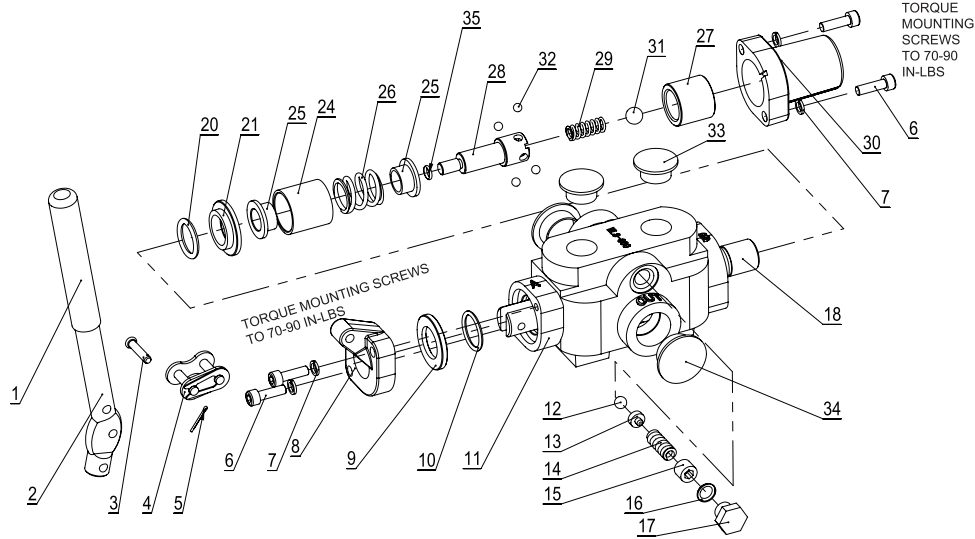


HYDRAULIC KICK OFF CONTROL VALVE

INSTRUCTION MANUAL

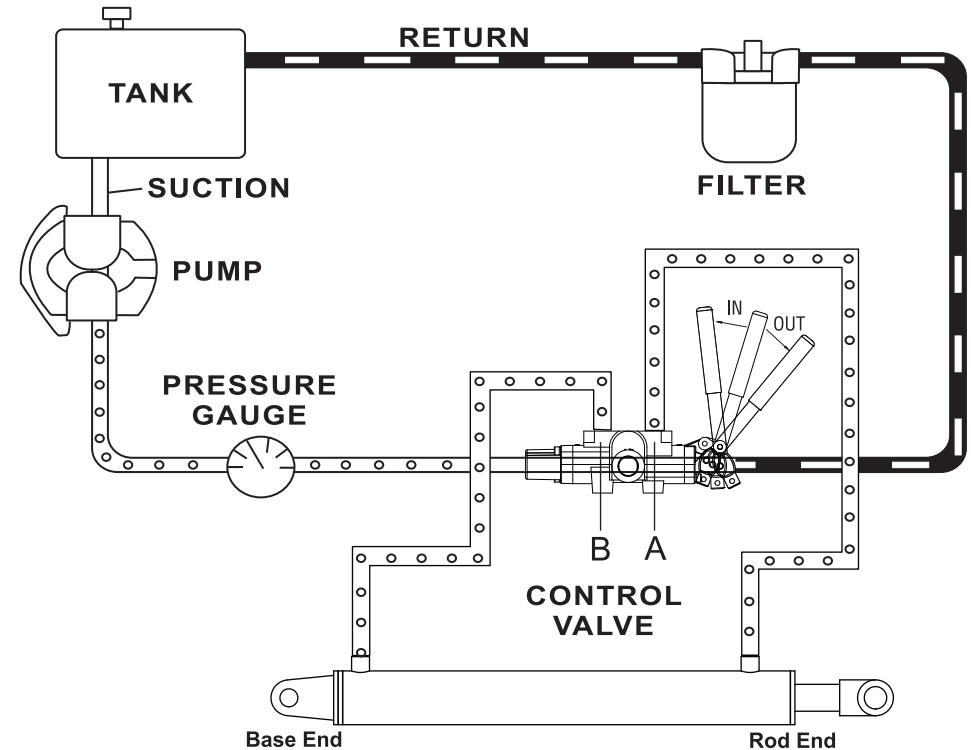


Part No.	Q'TY	Description	Part No.	Q'ty	Description
11	1	Control Valve Body	1	1	Grip (Black)
18	1	Valve Spool	2	1	Control Lever
10	1	O-Ring	3	1	Clevis Pin
16	1	O-Ring	4	1	Chain Link
35	1	Seal	5	1	Cotter Pin
20	1	O-Ring	6	2	Screw
21	1	Seal Retainer	7	2	Washer
24	1	Machinery Bushing	8	1	Handle Bracket
25	2	Spring Sleeve	9	1	Seal Retainer
26	1	Spring, Valve Spool	33	2	Working Port Plug
27	1	Detent Sleeve	34	2	In&Outlet Port Plug
32	4	Steel Ball			
28	1	Detent Ball Holder			
29	1	Spring, Compression			
31	1	Steel Ball			
7	2	Washer			
6	2	Screw			
30	1	Spring Cover			
12	1	Steel Ball			
13	1	Adapter			
14	1	Spring			
15	1	Adjusting Screw			
17	1	Hex Plug			

HYDRAULIC KICK OFF CONTROL VALVE

INSTRUCTION MANUAL

HYDRAULIC CIRCUIT



INSTALLATIONS

The valve is mounted so the handle is on the cylinder rod end as shown. Push handle IN, cylinder extends to split log. Pull handle out, cylinder retract. When the cylinder retracts completely, handle kick back to neutral automatically. The kick-out pressure is non-adjustable preset at 700psi.

- DO NOT connect hoses to cylinder opposite from the diagram or the valve will stay in power extend (splitting) position and could cause serious injury. This includes connecting the input flow to the out port or connecting the "A" port to the base end of the cylinder.

THE OIL FLOW WHICH STROKES THE CYLINDER IN THE LOGSPLITTING DIRECTION MUST COME FROM THE VALVE PORT AWAY FROM THE HANDLE-("B" PORT). "B" port should always be plumbed to the base end of the cylinder. Oil is supplied to this port by shifting the valve handle IN as noted in the above installations.

- DO NOT connect a return line (low pressure) filter directly to the outlet of the logsplitter valve. Decompression of the cylinder could blow off the filter cartridge, causing an oil spill and possible spraying of operators or bystanders with hot hydraulic oil.

HYDRAULIC KICK OFF CONTROL VALVE

INSTRUCTION MANUAL

SAFETY

Pressure Release Detent (Kick out mechanism)

This feature provides a pressure release detent for the handle "out" position. When the spool is manually placed in the detent position, oil is directed to the "A" work port (the port closest to the handle). When the pressure in the "A" port reaches a preset level, the detent will release and the spool will center. The factory setting is 700psi. The detent release pressure is non-adjustable.

Relief Valve

An adjustable ball spring relief valve is standard on all Detent Control valves. The standard factory setting is 2, 250PSI @ 4 gpm and 120°F. Other setting can be specified.

The relief pressure is adjusted by removing Hex Plug (Parts No.17), and turning the Adjusting Screw (Part No 15). Turning the Adjusting Screw clockwise will increase the pressure and counter-clockwise will decrease the pressure (a pressure gauge must be installed in the inlet line whenever the relief pressure is adjusted). Adjustable pressure range is 700psi to 3265psi. Do not backout adjusting screw to the point it falls out.

IMPROPER MOUNTING: Always use the proper size fittings. Hook up "in" & "out" as noted on the valve body. Do not over torque pipe fittings. (Use liquid pipe sealant only) Mounting surfaces should be flat and care should be taken when tightening mounting bolts. Over-tightened bolts can cause spool bind and casting breakage.

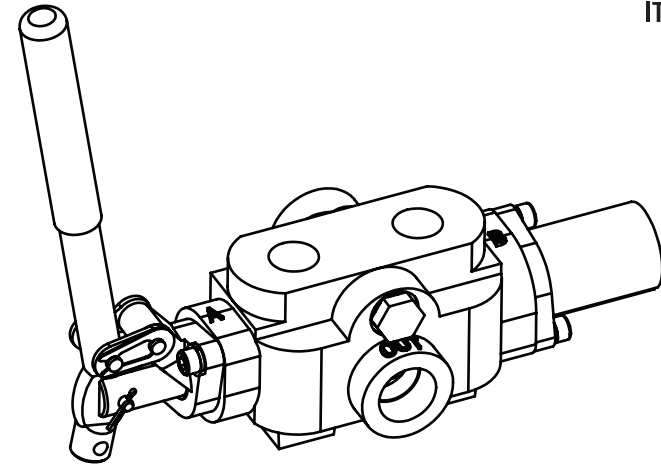
WARNING:

- DO NOT hold the valve handle in the return position. This position is held firm by the detent mechanism until the cylinder retracts and kicks out to neutral position by hydraulic pressure. Holding the valve lever puts undue stress on all components and could cause serious injury.
- DO NOT change or adjust hydraulic system components while under pressure. Serious injury could result.
- DO NOT remove any internal parts from this valve assembly in an attempt to modify its function.
- DO NOT Use Teflon Tape, use Liquid Pipe sealant only
- Make sure all bolts are tightened and torqued to the recommended specification. Bent or broken parts should not be used. Replace immediately. Always use exact replacements. Always protect valve spool from paint overspray.
- Faulty quick disconnects can cause high back pressures and sticking spools. Check quick disconnects periodically to make sure they are functioning properly. If valve spool does not center or appears to stick, do not use!
- Cracked ports are not covered under warranty.

HYDRAULIC KICK OFF CONTROL VALVE

INSTRUCTION MANUAL

ITEM# WLS-800



SPECIFICATIONS

MAXIMUM TANK PRESSURE	500 PSI
MAXIMUM OPERATING PRESSURE	3,265 PSI
MAXIMUM OPERATING TEMPERATURE	180°F
MAXIMUM FLOW RATING	30 GPM
RECOMENDED SYSTEM FILTRATION	10 MICRON

- Inlet/Outlet Ports: 3/4" NPT
- Working Ports: 1/2" NPT
- Relief valve adjustable to 3,625 PSI, preset at 2,250 PSI@ 4 GPM and 120°F
- Detent release pressure preset at 700 PSI
- Automatically kicks back to neutral when cylinder completes stroke
- Ideal for log splitter building

INSTALLATION DIMENSION

