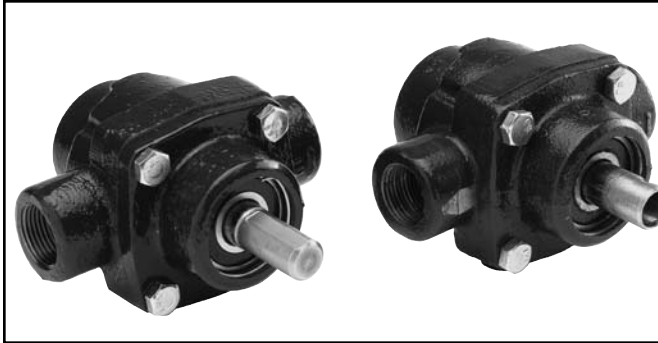


Roller Pump Repair and Parts

Roller Pump 4400/4401 Series

4-Roller Side Port Roller Pump



Pump Disassembly

Note: The numbers in parentheses used in the following text refer to the exploded view and parts list provided on the back side.

1. With a screwdriver, remove snap ring (1). Lift out nameplate (2).
2. With a 9/16-inch wrench, unscrew capscrews (3).
3. With cover plate down, cradle pump on "IN" and "OUT" ports on fixture under an arbor press. A cradle can be constructed of 2" x 4" lumber. Press the shaft and rotor assembly (6) down through the pump body, bearing the seal. The shaft and rotor assembly will remain in the end plate.
4. Lift off seal ring (4). Slide out rollers (5).
5. Check body for wear. File off any burrs that appear on rotor.
6. Make sure rollers (5) move freely in rotor slots. Replace rollers if out-of-round, swollen or badly worn.
7. If further disassembly is required:
 - a. Press out shaft and rotor assembly (6) from end plate (7) with an arbor press while supporting the end plate on a cradle. Remove snap ring (1).
 - b. To remove bearing, use a small piece of brass rod and gently tap with hammer on the inner edges of the bearing. Drive the seal out with a screwdriver and hammer. Discard seal.

Assembly

1. Contents of the repair kit includes rollers, seals and seal ring (see parts list on back for details).
2. Position a new seal in seal housing with folded edge down. Press seal down on outer edge until it "bottoms."
3. Position bearing (8) in bearing housing and press downward until it "bottoms." Apply pressure to outer bearing race.
4. File off any burrs on the rotor faces and roller slots that may have been caused by disassembly and handling.
5. Apply a light oil to shaft, end plate surface, and inside pump body.
6. Press shaft and rotor into body, by easing the rotor shaft through the seal; then press shaft with an arbor press while supporting body bearing inner race.
7. Insert rollers (5), one in each slot.
8. Place seal ring (4) in groove.
9. Position end plate (7) for pressing down on pump body (10), easing the shaft carefully through the seal. Carefully line up matching holes of pump body and end plate.
10. Press pump together in an arbor press (Fig. 4), making sure the pressing force is applied to the inner race of the ball bearing. A sleeve with at least a 1 inch bore (that does not exceed 2 inches outside diameter) should be used.
11. Secure end plate with four capscrews (3).
12. After tightening capscrews, turn the shaft to make sure rotor is not binding in pump. (It may be necessary to hold shaft in vise when rotating body to check for binding.)
13. Tap shaft with a brass hammer. If this fails to center rotor, tap the other end of the shaft lightly. The rotor should turn freely.

Roller Pump 4400 Series

RP 4400 Repair

2.01.05

4-Roller Side Port Roller Pumps

- Models:**
- 4400C** **Solid shaft, Cast Iron (blue finish)**
 - 4400N** **Solid shaft, Ni-Resist (brown finish)**
 - 4400D** **Solid shaft, Diamond™ Series (silver finish)**
 - 4401C** **Hollow shaft, Cast Iron (blue finish)**
 - 4401N** **Hollow shaft, Ni-Resist (brown finish)**
 - 4401D** **Hollow shaft, Diamond™ Series (silver finish)**

Universal Repair Kit

44-4000 RK

4-Roller Pump Repair Kit for 4400 and 4401 Pumps

| Part # | Description | Qty/Kit |
|-----------|------------------------------|---------|
| 48234 | Roller, Ultra, 1/2" diameter | 4 |
| 20468 | Universal Lip Seal, Viton | 2 |
| 50047 | Lip Seal, Viton | 2 |
| 31350-138 | Universal Seal Ring | 1 |
| 31350-142 | Seal Ring | 1 |

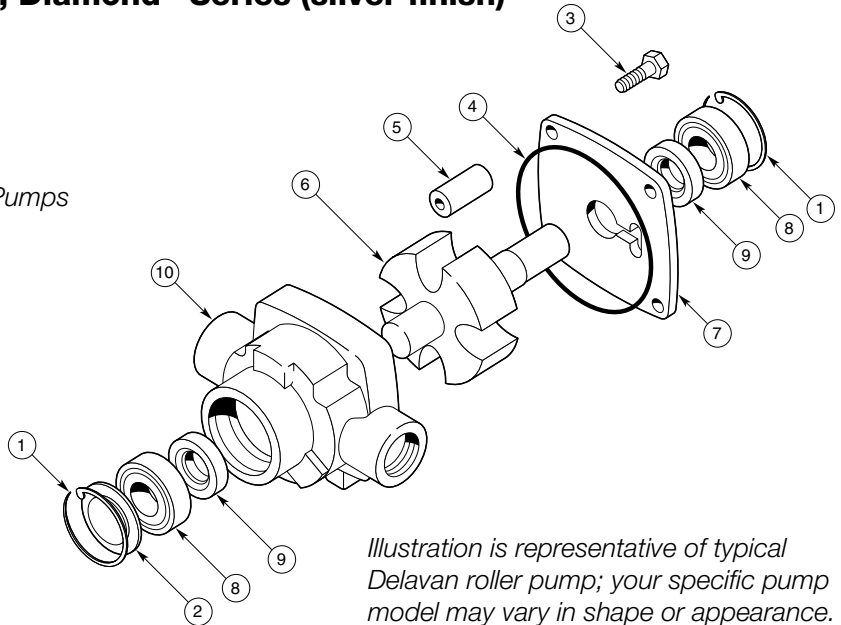


Illustration is representative of typical Delavan roller pump; your specific pump model may vary in shape or appearance.

4400 Series Pump Parts

| Ref # | Qty/ Pump | Part # | Description |
|-------|-----------|-----------|--------------------------------------------|
| 1 | 2 | 15070 | Snap Ring |
| 2 | 1 | 48237 | Nameplate 4400C |
| | | 48237-1 | Nameplate 4400N |
| | | 48237-2 | Nameplate 4400D |
| 3 | 4 | 48236 | Cap Screw |
| 4 | 1 | 31350-142 | Seal Ring |
| 5 | 4 | 48234 | Ultra Rollers 1/2" |
| 6 | 1 | 32401 | Solid Shaft & Rotor (Cast Iron/Ni-Resist) |
| | | 32403 | Solid Shaft & Rotor (Diamond) |
| | | 32402 | Hollow Shaft & Rotor (Cast Iron/Ni-Resist) |
| | | 32404 | Hollow Shaft & Rotor (Diamond) |
| 7 | 1 | 46231-1 | Endplate (Cast Iron) |
| | | 46231-2 | Endplate (Ni-Resist) |
| | | 46231-3 | Endplate (Diamond) |
| 8 | 2 | 15072 | Bearing STD#6203ZZ |
| 9 | 2 | 50047 | Lip Seal, Viton |
| 10 | 1 | 48229-1 | Pump Body (Cast Iron) |
| | | 48229-2 | Pump Body (Ni-Resist) |
| | | 48229-3 | Pump Body (Diamond) |

Roller Pump Repair and Parts

Roller Pump 5500 Series

5-Roller Side Port Roller Pump



Pump Disassembly

Note: The numbers in parentheses used in the following text refer to the exploded view and parts list provided on the back side.

1. With a screwdriver, remove snap ring (1). Lift out nameplate (2).
2. With a 9/16-inch wrench, unscrew capscrews (3).
3. With cover plate down, cradle pump on "IN" and "OUT" ports on fixture under an arbor press. A cradle can be constructed of 2" x 4" lumber. Press the shaft and rotor assembly (6) down through the pump body, bearing the seal. The shaft and rotor assembly will remain in the end plate.
4. Lift off seal ring (4). Slide out rollers (5).
5. Check body for wear. File off any burrs that appear on rotor.
6. Make sure rollers (5) move freely in rotor slots. Replace rollers if out-of-round, swollen or badly worn.
7. If further disassembly is required:
 - a. Press out shaft and rotor assembly (6) from end plate (7) with an arbor press while supporting the end plate on a cradle. Remove snap ring (1).
 - b. To remove bearing, use a small piece of brass rod and gently tap with hammer on the inner edges of the bearing. Drive the seal out with a screwdriver and hammer. Discard seal.

Assembly

1. Contents of the repair kit includes rollers, seals and seal ring (see parts list on back for details).
2. Position a new seal in seal housing with folded edge down. Press seal down on outer edge until it "bottoms."
3. Position bearing (8) in bearing housing and press downward until it "bottoms." Apply pressure to outer bearing race.
4. File off any burrs on the rotor faces and roller slots that may have been caused by disassembly and handling.
5. Apply a light oil to shaft, end plate surface, and inside pump body.
6. Press shaft and rotor into body, by easing the rotor shaft through the seal; then press shaft with an arbor press while supporting body bearing inner race.
7. Insert rollers (5), one in each slot.
8. Place seal ring (4) in groove.
9. Position end plate (7) for pressing down on pump body (10), easing the shaft carefully through the seal. Carefully line up matching holes of pump body and end plate.
10. Press pump together in an arbor press (Fig. 4), making sure the pressing force is applied to the inner race of the ball bearing. A sleeve with at least a 1 inch bore (that does not exceed 2 inches outside diameter) should be used.
11. Secure end plate with four capscrews (3).
12. After tightening capscrews, turn the shaft to make sure rotor is not binding in pump. (It may be necessary to hold shaft in vise when rotating body to check for binding.)
13. Tap shaft with a brass hammer. If this fails to center rotor, tap the other end of the shaft lightly. The rotor should turn freely.

Roller Pump 5500 Series

RP 5500 Repair

2.01.05

5-Roller Side Port Roller Pumps

Models: 5500C Cast iron (blue finish)
5500N Ni-Resist (brown finish)
5500D Diamond™ Series (silver finish)

Universal Repair Kit

55-1700 RK

5-Roller Pump Repair Kit for 5500 Pump

| Part # | Description | Qty/Kit |
|-----------|----------------------------|---------|
| 48253 | Roller, Ultra, 1" diameter | 5 |
| 47927 | Lip Seal, Viton | 2 |
| 31350-157 | Universal Seal Ring | 1 |
| 48252 | Seal Ring | 1 |

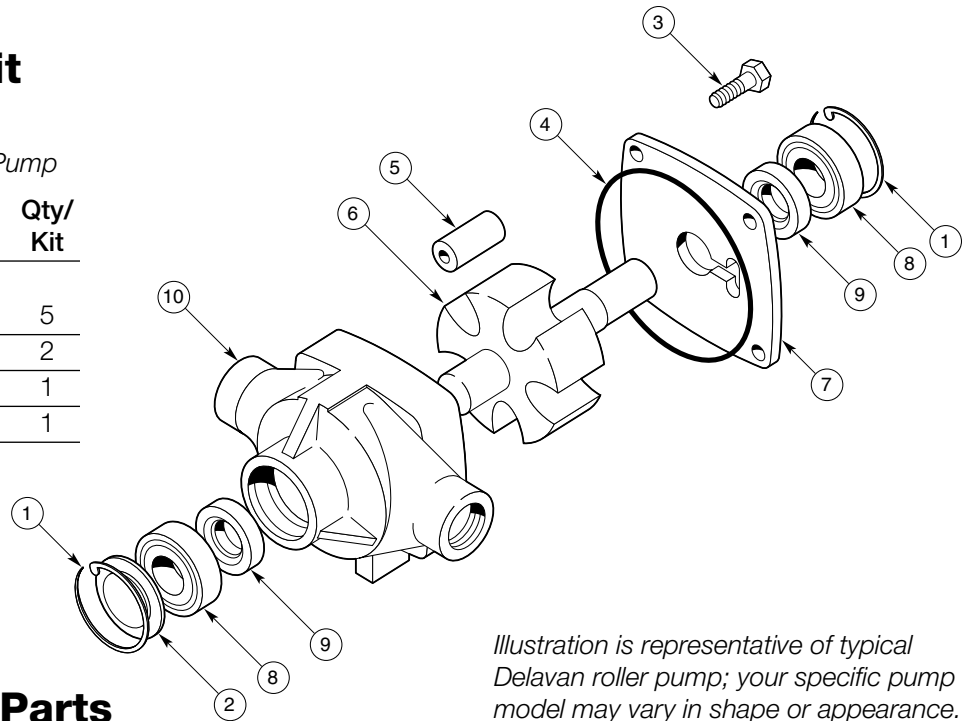


Illustration is representative of typical Delavan roller pump; your specific pump model may vary in shape or appearance.

5500 Series Pump Parts

| Ref # | Qty/ Pump | Part # | Description |
|-------|-----------|---------|-------------------------------------|
| 1 | 2 | 15334 | Snap Ring |
| 2 | 1 | 48255-2 | Nameplate 5500C |
| | | 48255-1 | Nameplate 5500N |
| | | 48255-6 | Nameplate 5500D |
| 3 | 4 | 15341 | Cap Screw |
| 4 | 1 | 48252 | Seal Ring |
| 5 | 5 | 48253 | Ultra Rollers 1" |
| 6 | 1 | 32501 | Shaft & Rotor (Cast Iron/Ni-Resist) |
| | | 32503 | Shaft & Rotor (Diamond) |
| 7 | 1 | 48248-1 | Endplate (Cast Iron) |
| | | 48248-2 | Endplate (Ni-Resist) |
| | | 48248-3 | Endplate (Diamond) |
| 8 | 2 | 16228 | Bearing STD#6705ZZ |
| 9 | 2 | 47927 | Lip Seal, Viton |
| 10 | 1 | 48246-1 | Pump Body (Cast Iron) |
| | | 48246-2 | Pump Body (Ni-Resist) |
| | | 48246-3 | Pump Body (Diamond) |

Roller Pump Repair and Parts

Roller Pump 6600/6601 Series

6-Roller Side or Rear Port Roller Pumps



Pump Disassembly

Note: The numbers in parentheses used in the following text refer to the exploded view and parts list provided on the back side.

1. With a screwdriver, remove snap ring (1). Lift out nameplate (2).
2. With a 9/16-inch wrench, unscrew capscrews (3).
3. With cover plate down, cradle pump on "IN" and "OUT" ports on fixture under an arbor press. A cradle can be constructed of 2" x 4" lumber. Press the shaft and rotor assembly (6) down through the pump body, bearing the seal. The shaft and rotor assembly will remain in the end plate.
4. Lift off seal ring (4). Slide out rollers (5).
5. Check body for wear. File off any burrs that appear on rotor.
6. Make sure rollers (5) move freely in rotor slots. Replace rollers if out-of-round, swollen or badly worn.
7. If further disassembly is required:
 - a. Press out shaft and rotor assembly (6) from end plate (7) with an arbor press while supporting the end plate on a cradle. Remove snap ring (1).
 - b. To remove bearing, use a small piece of brass rod and gently tap with hammer on the inner edges of the bearing. Drive the seal out with a screwdriver and hammer. Discard seal.

Assembly

1. Contents of the repair kit includes rollers, seals and seal ring (see parts list on back for details).
2. Position a new seal in seal housing with folded edge down. Press seal down on outer edge until it "bottoms."
3. Position bearing (8) in bearing housing and press downward until it "bottoms." Apply pressure to outer bearing race.
4. File off any burrs on the rotor faces and roller slots that may have been caused by disassembly and handling.
5. Apply a light oil to shaft, end plate surface, and inside pump body.
6. Press shaft and rotor into body, by easing the rotor shaft through the seal; then press shaft with an arbor press while supporting body bearing inner race.
7. Insert rollers (5), one in each slot.
8. Place seal ring (4) in groove.
9. Position end plate (7) for pressing down on pump body (10), easing the shaft carefully through the seal. Carefully line up matching holes of pump body and end plate.
10. Press pump together in an arbor press (Fig. 4), making sure the pressing force is applied to the inner race of the ball bearing. A sleeve with at least a 1 inch bore (that does not exceed 2 inches outside diameter) should be used.
11. Secure end plate with four capscrews (3).
12. After tightening capscrews, turn the shaft to make sure rotor is not binding in pump. (It may be necessary to hold shaft in vise when rotating body to check for binding.)
13. Tap shaft with a brass hammer. If this fails to center rotor, tap the other end of the shaft lightly. The rotor should turn freely.

Roller Pump 6600/6601 Series

RP 6600/6601 Repair

2.01.05

6-Roller Side or Rear Port Roller Pumps

| | | |
|----------------|--------------|----------------------------------------------------|
| Models: | 6600C | Side Ports, Cast Iron (blue finish) |
| | 6600N | Side Ports, Ni-Resist (brown finish) |
| | 6600D | Side Ports, Diamond™ Series (silver finish) |
| | 6601C | Rear Ports, Cast Iron (blue finish) |

Universal Repair Kit

66-6500 RK

6-Roller Pump Repair Kit for 6600 and 6601 Pumps

| Part # | Description | Qty/Kit |
|-----------|--------------------------------|---------|
| 19341 | Roller, Ultra, 11/16" diameter | 6 |
| 20468 | Universal Lip Seal, Viton | 2 |
| 50047 | Lip Seal, Viton | 2 |
| 31350-238 | Universal Seal Ring | 1 |
| 24819 | Seal Ring | 1 |

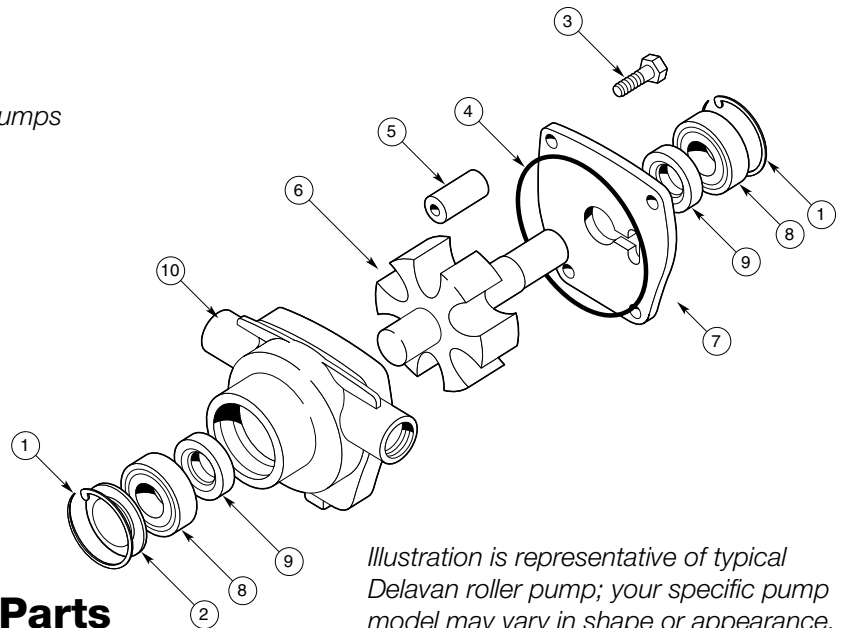


Illustration is representative of typical Delavan roller pump; your specific pump model may vary in shape or appearance.

6600/6601 Series Pump Parts

| Ref # | Qty/ Pump | Part # | Description |
|-------|-----------|---------|-------------------------------------|
| 1 | 2 | 15070 | Snap Ring |
| 2 | 1 | 46210-2 | Nameplate 6600C |
| | | 46210-7 | Nameplate 6600N |
| | | 46210-3 | Nameplate 6600D |
| | | 46210-1 | Nameplate 6601C |
| 3 | 4 | 15077 | Cap Screw |
| 4 | 1 | 24819 | Seal Ring |
| 5 | 6 | 19341 | Ultra Rollers 11/16" |
| | | 19342 | Polypropylene Rollers 11/16" |
| 6 | 1 | 32601 | Shaft & Rotor (Cast Iron/Ni-Resist) |
| | | 32603 | Shaft & Rotor (Diamond) |
| 7 | 1 | 34601 | End Plate (Cast Iron) |
| | | 31664-2 | End Plate (Ni-Resist) |
| | | 31664-3 | End Plate (Diamond) |
| 8 | 2 | 15072 | Bearing (STD#6203ZZ) |
| 9 | 2 | 50047 | Lip Seal, Viton |
| 10 | 1 | 33601 | Pump Body (Cast Iron, Side Ports) |
| | | 50073-2 | Pump Body (Ni-Resist, Side Ports) |
| | | 50073-3 | Pump Body (Diamond, Side Ports) |
| | | 24817 | Pump Body (Cast Iron, Rear Ports) |

Old Style Delavan Roller Pump Repair Kit 25227

For 66-3110 old style Delavan Roller Pumps

| Part # | Description | Qty/Kit |
|-----------|------------------------------|---------|
| 22059 | Roller, Ultra, 3/4" diameter | 6 |
| 20468 | Universal Lip Seal, Viton | 2 |
| 50047 | Lip Seal, Viton | 2 |
| 31350-238 | Universal Seal Ring | 1 |
| 24819 | Seal Ring | 1 |

Roller Pump Repair and Parts

Roller Pump 7000 Series

7-Roller Side Port Roller Pumps



Pump Disassembly

Note: The numbers in parentheses used in the following text refer to the exploded view and parts list provided on the back side.

1. With a screwdriver, remove snap ring (1). Lift out nameplate (2).
2. With a 9/16-inch wrench, unscrew capscrews (3).
3. With cover plate down, cradle pump on "IN" and "OUT" ports on fixture under an arbor press. A cradle can be constructed of 2" x 4" lumber. Press the shaft and rotor assembly (6) down through the pump body, bearing the seal. The shaft and rotor assembly will remain in the end plate.
4. Lift off seal ring (4). Slide out rollers (5).
5. Check body for wear. File off any burrs that appear on rotor.
6. Make sure rollers (5) move freely in rotor slots. Replace rollers if out-of-round, swollen or badly worn.
7. If further disassembly is required:
 - a. Press out shaft and rotor assembly (6) from end plate (7) with an arbor press while supporting the end plate on a cradle. Remove snap ring (1).
 - b. To remove bearing, use a small piece of brass rod and gently tap with hammer on the inner edges of the bearing. Drive the seal out with a screwdriver and hammer. Discard seal.

Assembly

1. Contents of the repair kit includes rollers, seals and seal ring (see parts list on back for details).
2. Position a new seal in seal housing with folded edge down. Press seal down on outer edge until it "bottoms."
3. Position bearing (8) in bearing housing and press downward until it "bottoms." Apply pressure to outer bearing race.
4. File off any burrs on the rotor faces and roller slots that may have been caused by disassembly and handling.
5. Apply a light oil to shaft, end plate surface, and inside pump body.
6. Press shaft and rotor into body, by easing the rotor shaft through the seal; then press shaft with an arbor press while supporting body bearing inner race.
7. Insert rollers (5), one in each slot.
8. Place seal ring (4) in groove.
9. Position end plate (7) for pressing down on pump body (10), easing the shaft carefully through the seal. Carefully line up matching holes of pump body and end plate.
10. Press pump together in an arbor press (Fig. 4), making sure the pressing force is applied to the inner race of the ball bearing. A sleeve with at least a 1 inch bore (that does not exceed 2 inches outside diameter) should be used.
11. Secure end plate with four capscrews (3).
12. After tightening capscrews, turn the shaft to make sure rotor is not binding in pump. (It may be necessary to hold shaft in vise when rotating body to check for binding.)
13. Tap shaft with a brass hammer. If this fails to center rotor, tap the other end of the shaft lightly. The rotor should turn freely.

Roller Pump 7000 Series

RP 7000 Repair

2.01.05

7-Roller Side Port Roller Pumps

Models: 7000C Cast Iron (blue finish)
7000N Ni-Resist (brown finish)
7000D Diamond™ Series (silver finish)

Universal Repair Kit

70-7700 RK

7-Roller Pump Repair Kit for 7000 Series Pumps

| Part # | Description | Qty/Kit |
|-----------|--------------------------------|---------|
| 19341 | Roller, Ultra, 11/16" diameter | 7 |
| 47927 | Lip Seal, Viton | 2 |
| 31350-155 | Universal Seal Ring | 1 |
| 24829 | Seal Ring | 1 |

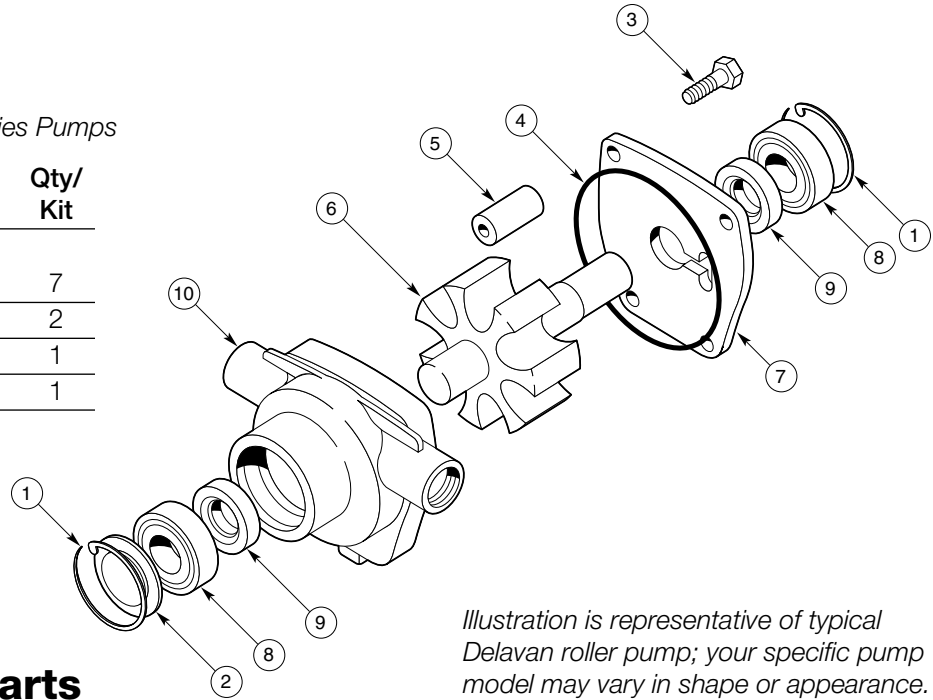


Illustration is representative of typical Delavan roller pump; your specific pump model may vary in shape or appearance.

7000 Series Pump Parts

| Ref # | Qty/ Pump | Part # | Description |
|-------|-----------|---------|-------------------------------------|
| 1 | 2 | 15334 | Snap Ring |
| 2 | 1 | 46209-3 | Nameplate 7000C |
| | | 46209-4 | Nameplate 7000N |
| | | 46209-7 | Nameplate 7000D |
| 3 | 4 | 15341 | Cap Screw |
| 4 | 1 | 24829 | Seal Ring |
| 5 | 7 | 19341 | Ultra Rollers 11/16" |
| | | 19342 | Polypropylene Rollers 11/16" |
| 6 | 1 | 32702 | Shaft & Rotor (Cast Iron/Ni-Resist) |
| | | 32705 | Shaft & Rotor (Diamond) |
| 7 | 1 | 34701 | End Plate (Cast Iron) |
| | | 31666-2 | End Plate (Ni-Resist) |
| | | 31666-5 | End Plate (Diamond) |
| 8 | 2 | 16228 | Bearing (STD#6205ZZ) |
| 9 | 2 | 47927 | Lip Seal, Viton |
| 10 | 1 | 33701 | Pump Body (Cast Iron) |
| | | 24842-2 | Pump Body (Ni-Resist) |
| | | 24842-5 | Pump Body (Diamond) |

Old Style Delavan Roller Pump Repair Kit 25228

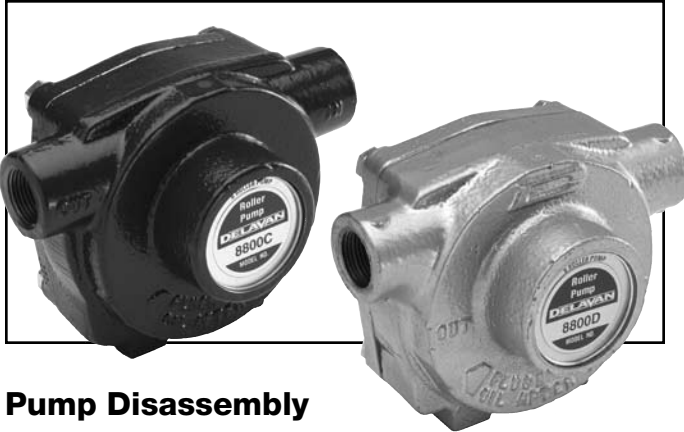
For 77-3110, 77-3111, 77-4110 and 77-4111 old style Delavan Pumps

| Part # | Description | Qty/Kit |
|-----------|------------------------------|---------|
| 22059 | Roller, Ultra, 3/4" diameter | 7 |
| 47927 | Lip Seal, Viton | 2 |
| 31350-155 | Universal Seal Ring | 1 |
| 24829 | Seal Ring | 1 |

Roller Pump Repair and Parts

Roller Pump 8800 Series

8-Roller Side Port Roller Pumps



Pump Disassembly

Note: The numbers in parentheses used in the following text refer to the exploded view and parts list provided on the back side.

1. With a screwdriver, remove snap ring (1). Lift out nameplate (2).
2. With a 9/16-inch wrench, unscrew capscrews (3).
3. With cover plate down, cradle pump on "IN" and "OUT" ports on fixture under an arbor press. A cradle can be constructed of 2" x 4" lumber. Press the shaft and rotor assembly (6) down through the pump body, bearing the seal. The shaft and rotor assembly will remain in the end plate.
4. Lift off seal ring (4). Slide out rollers (5).
5. Check body for wear. File off any burrs that appear on rotor.
6. Make sure rollers (5) move freely in rotor slots. Replace rollers if out-of-round, swollen or badly worn.
7. If further disassembly is required:
 - a. Press out shaft and rotor assembly (6) from end plate (7) with an arbor press while supporting the end plate on a cradle. Remove snap ring (1).
 - b. To remove bearing, use a small piece of brass rod and gently tap with hammer on the inner edges of the bearing. Drive the seal out with a screwdriver and hammer. Discard seal.

Assembly

1. Contents of the repair kit includes rollers, seals and seal ring (see parts list on back for details).
2. Position a new seal in seal housing with folded edge down. Press seal down on outer edge until it "bottoms."
3. Position bearing (8) in bearing housing and press downward until it "bottoms." Apply pressure to outer bearing race.
4. File off any burrs on the rotor faces and roller slots that may have been caused by disassembly and handling.
5. Apply a light oil to shaft, end plate surface, and inside pump body.
6. Press shaft and rotor into body, by easing the rotor shaft through the seal; then press shaft with an arbor press while supporting body bearing inner race.
7. Insert rollers (5), one in each slot.
8. Place seal ring (4) in groove.
9. Position end plate (7) for pressing down on pump body (10), easing the shaft carefully through the seal. Carefully line up matching holes of pump body and end plate.
10. Press pump together in an arbor press (Fig. 4), making sure the pressing force is applied to the inner race of the ball bearing. A sleeve with at least a 1 inch bore (that does not exceed 2 inches outside diameter) should be used.
11. Secure end plate with four capscrews (3).
12. After tightening capscrews, turn the shaft to make sure rotor is not binding in pump. (It may be necessary to hold shaft in vise when rotating body to check for binding.)
13. Tap shaft with a brass hammer. If this fails to center rotor, tap the other end of the shaft lightly. The rotor should turn freely.

Roller Pump 8800 Series

RP 8800 Repair

2.01.05

8-Roller Side Port Roller Pumps

Models: 8800C Cast Iron (blue finish)
8800N Ni-Resist (brown finish)
8800D Diamond™ Series (silver finish)

Universal Repair Kit

88-7560 RK

8-Roller Pump Repair Kit for 8800 Series Pumps

| Part # | Description | Qty/Kit |
|-----------|--------------------------------|---------|
| 19341 | Roller, Ultra, 11/16" diameter | 8 |
| 47927 | Lip Seal, Viton | 2 |
| 31350-155 | Universal Seal Ring | 1 |
| 24829 | Seal Ring | 1 |

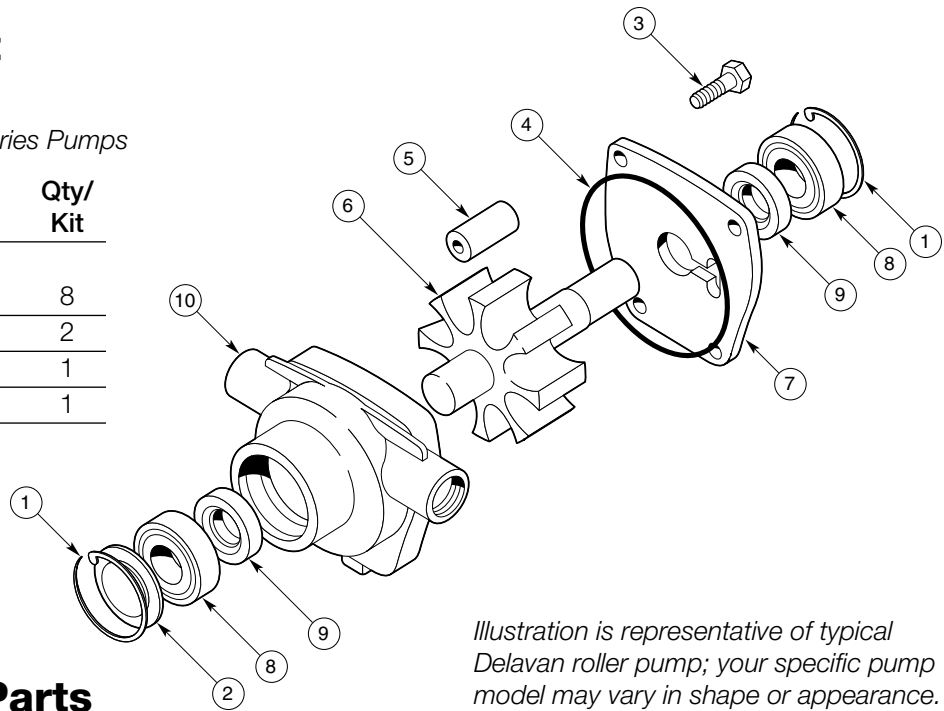


Illustration is representative of typical Delavan roller pump; your specific pump model may vary in shape or appearance.

8800 Series Pump Parts

| Ref # | Qty/ Pump | Part # | Description |
|-------|-----------|---------|-------------------------------------|
| 1 | 2 | 15334 | Snap Ring |
| 2 | 1 | 46209-1 | Nameplate 8800C |
| | | 46209-2 | Nameplate 8800N |
| | | 46209-6 | Nameplate 8800D |
| 3 | 4 | 15341 | Cap Screw |
| 4 | 1 | 24829 | Seal Ring |
| 5 | 8 | 19341 | Ultra Rollers 11/16" |
| | | 19342 | Polypropylene Rollers 11/16" |
| 6 | 1 | 32802 | Shaft & Rotor (Cast Iron/Ni-Resist) |
| | | 32805 | Shaft & Rotor (Diamond) |
| 7 | 1 | 34801 | End Plate (Cast Iron) |
| | | 31666-4 | End Plate (Ni-Resist) |
| | | 31666-6 | End Plate (Diamond) |
| 8 | 2 | 16228 | Bearing (STD#6205ZZ) |
| 9 | 2 | 47927 | Lip Seal, Viton |
| 10 | 1 | 33801 | Pump Body (Cast Iron) |
| | | 24842-4 | Pump Body (Ni-Resist) |
| | | 24842-6 | Pump Body (Diamond) |